

### MAIN FEATURES

- High efficiency SMD LED
- High efficiency heat sink body to ensure maximum LED durability
- Strong aluminium structure
- Beam angle 10°-30°-60°
- Wavelengths 850, 940 nm
- Adjustable built-in photocell
- VOLT free relay contact for external activation
- IP66/IP67

### DESCRIPTION

GEKO is the state of the art illuminator, which provides high reliability and excellent image quality. The light produced by the GEKO illuminator brightens the entire scene evenly, eliminating hotspots and underexposure, for unbeatable night-time images and secure surveillance of the area. The high efficiency heat sink body ensures maximum LED durability and protection against over-temperatures, whereas the front glass, made of special technopolymer, provides high IR transmittance. GEKO illuminators ensure a long LED lifetime, high efficiency and zero maintenance. They are also protected against electrostatic and atmospheric discharges (lightning).

These illuminators incorporate a circuit that allows them to be powered directly from a 12Vdc/24Vac or 24Vdc supply.

A weatherproof box with 230Vac or 120Vac power supply is available as accessory for one or two GEKO illuminators.

GEKO is supplied with a wall-mount bracket that rotates horizontally and vertically and can be assembled under a housing by means of the OSUPPIR bracket.



GEKO



GEKO



HOV + GEKO + OSUPPIR + WBJA

### IRH CONFIGURATION OPTIONS

IRH	Beam patterns	Power supply	Beam wavelengths	
10	Narrow	H High power	8 850nm	A00
30	Medium	L Low power	9 940nm	
60	Wide			

## TECHNICAL DATA

## GENERAL

Die-cast aluminium body  
 Supplied with horizontal and vertical rotation brackets made of galvanised painted steel  
 Infrared beam wavelengths: 850, 940 nm

## MECHANICAL

Dimensions (WxHxL): see drawings

## ELECTRICAL

Power supply: 12-24Vdc or 24Vac 50/60 Hz  
 Consumption: 6-12W  
 State of the art SMD LED  
 Adjustable built-in photocell for automatic activation and deactivation  
 Input for activation by means of a volt free relay contact  
 Supplied with multicore cable L=2m  
 Cable size 4xAWG22 (0.34 mm<sup>2</sup>)

## ENVIRONMENT

Indoor / Outdoor  
 Operating temperature: -50°C\+60°C (with illuminator on)  
 IP66/IP67 according to EN60529

## CERTIFICATIONS

Electrical safety: EN60598  
 Photobiological safety of lamps and lamp systems: EN 62471  
 Electromagnetic Compatibility: EN55022, class B  
 Immunity: EN50130-4  
 FCC Part 15 class B

## ACCESSORIES

IRHPS230 Power supply for 2 illuminators IRH, IN  
 230Vac 50/60Hz - OUT 24Vac 30W  
 IRHPS120 Power supply for 2 illuminators IRH, IN  
 120Vac 50/60Hz - OUT 24Vac 30W

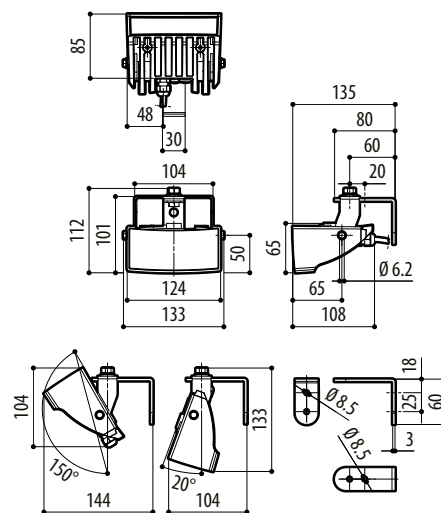
## BRACKETS AND ADAPTORS

OSUPPIR Bracket for mounting 1 IRH/IR50/IRBD infrared illuminator under the housing

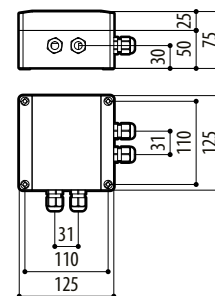
## IRH ACHIEVABLE DISTANCES

	850nm low power	850nm high power (=1,4 x low power)	940nm
10°	100m (328ft)	140m (460ft)	100m (328ft)
30°	60m (197ft)	84m (276ft)	60m (197ft)
60°	40m (131ft)	56m (184ft)	40m (131ft)

\* Achievable distance with: CCD 1/3" Day/Night camera, sensitivity 0.01Lux S/N >50dB. Lens: F1.3 7.5-50mm Varifocal, 1/3" IR Corrected, The typical distance of the subject to illuminate is in function of the reflection coefficient of the illuminated scene.



GEKO



IRHPS

mm 1:10

## PACKAGE

Code	Unit weight		Package weight		Package dimensions (WxHxL)		Master carton unit
	kg	lb	kg	lb	cm	in	
IRH	0.9	2.0	1.00	2.2	23.0x10.0x16.0	9.0x3.9x6.3	-