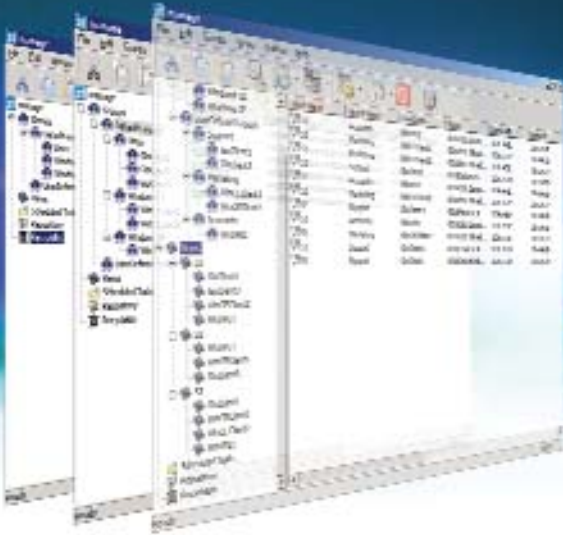


Make short work of a big job.



XLmanage Thin client remote management

So many workstations and laptops; so little time. Time isn't a problem when you're using XLmanage, VXL's powerful remote management software for Gio Linux and Microsoft Windows CE/XP Embedded thin clients. Fast, easy remote management.



About VXL

VXL is one of the world's largest suppliers of thin clients.

Established in 1976, VXL has grown steadily and now has over three hundred people worldwide – with offices in Australia, Germany, France, India, the United States and the United Kingdom. The company's headquarters is in Bangalore, India.

Using XLmanage, administrators can easily and securely manage desktop and laptop thin clients. XLmanage's intuitive and user-friendly GUI makes it simple to use the powerful remote management tools – making short work of keeping workstations up-to-date.

Low network footprint

XLmanage uses minimal network resources, enabling it to scale from the smallest local network to the largest multisite WAN. So when you're managing clients, your network isn't brought to its knees.

Industry-standard protocols

XLmanage uses the industry-standard protocols that you already use: standards like FTP, HTTP and COM/DCOM.

Powerful and flexible

Automatic and manual device detection make it easy to find and configure clients. Groups and views of clients can be customised – and automated updates can be rolled out, via IP ranges and subnets, to selected clients.

Remote management included

Every Itona thin client workstation and laptop (Linux-based) comes with powerful XLmanage remote management software, ready for central management.

XLmanage

Thin client remote management

XLmanage is VXL's powerful remote management software for thin clients. XLmanage gives administrators access to powerful management tools, via an easy-to-use GUI interface.

Features	Benefits
Remote management for Linux and Microsoft Windows thin client workstations and laptops.	Manage multiple clients from a single application, regardless of location and operating system.
Powerful GUI-based interface.	Minimal learning curve reduces training costs and puts people in control fast.
Wizard-based installation.	Installing XLmanage couldn't be simpler – and the automatic search and detection of components required by XLmanage eliminates wasted time.
Open standards architecture.	XLmanage uses open standards such as FTP and HTTP for compatibility, performance and scalability.
Flexible groups and views of devices.	Manage devices in a way that suits you – such as organisational structure, physical/geographic location or type of hardware. Create groups based on IP ranges or subnets.
Automatic discovery of clients.	No hunting around - devices are auto-detected as they come on line within a LAN, WAN and NAT network.
Automated scheduled updates.	Using push/pull techniques, updates can be scheduled to minimise (or eliminate) disturbance to users.
Easily distributable firmware and configuration updates.	Administrators can easily create software repositories and can then use these easily within scheduled updates, using a drag-and-drop interface.
Wake on LAN, remote shutdown and reboot of clients.	Turn clients on and off from a single location.
Send messages to clients.	Easily notify users of remote operations by sending messages.
Database support.	Support for MSDE and MS-SQL Server RDBMS ensures that XLmanage can scale to support thousands of devices.



VXL Instruments

Offices in Australia, Germany, France, India, the United States and the United Kingdom

Web: www.vxl.net

E-mail: sales@vxl.net

VXL Instruments Limited, 'House of Excellence', No 17 Electronics City, Hosur Road, Bangalore 560 100, India
Tel: +91 80 30222525 (5 lines) **Fax:** +91 80 28520095 **Web:** www.vxl.net **E-mail:** sales@vxl.net

E&OE. Specifications subject to change without notice. All trademarks are acknowledged and remain the property of their respective owners.